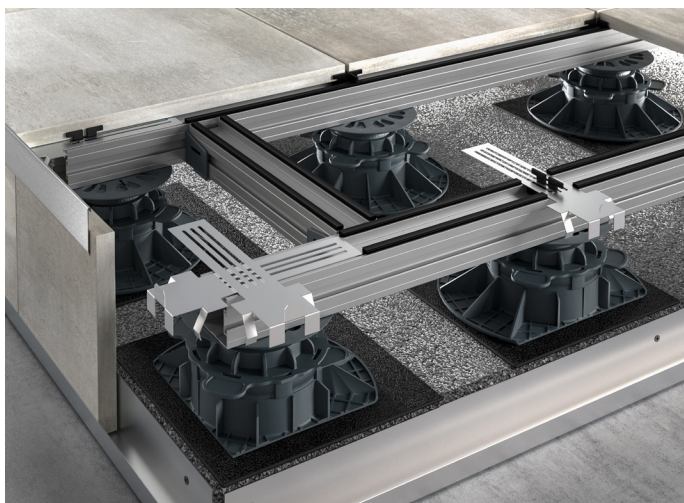


## PROSTILTadvance 2.0

### Aluminium subconstruction system for balconies and terraces



#### Use and applications

PROSTILTadvance 2.0 is our support structure for patios, consisting of an aluminium substructure in connection with pedestal supports. Suitable accessories, such as L-connector and cross connectors, enable the formation of a connected, dimensionally stable construction level with optimised load distribution. In addition to outdoor ceramic and natural stone, wood and WPC can also be laid with this system independent of size, laying image and slab format.

The length of the aluminium profile PROSTILTadvance 2.0 is 2400 mm and can be shortened as required or extended by means of a L-connector. Lateral C-grooves enable the incorporation of cross connectors and edge profile brackets as well as bendable profile connectors. An open square groove on the upper profile side enables the incorporation of a sliding carriage. In combination with the joint clip X or joint clip T (insert in the sliding carriage), slabs or WPC/wooden decking boards can be laid with groove.

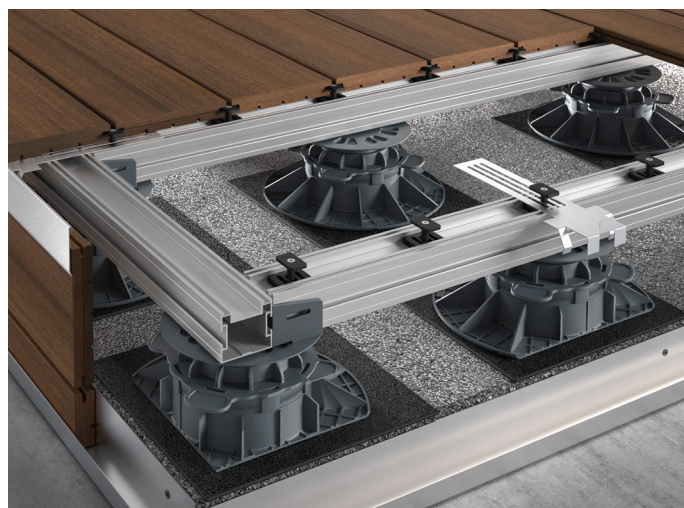
When laying WPC/wooden decking boards without groove, the profile can be rotated. Two

additional C-grooves on the upper profile side are used for receiving the silence strip, which is used for minimising impact sound and decoupling for slabs made of e.g. ceramic, natural stone or concrete stone.

For the lateral finish, the aluminium substructure system PROSTILTadvance 2.0 provides different solutions that can be individually tailored to the specific application. The suitable spacer can be precisely inserted with edge profile brackets.

An even expansion joint of 1 cm is created to adjoining components with the spacer and a pre-glued neoprene pad. Different options are available for facing open sides:

- Facing using a connection bracket and the construction profiles
- TOS profile as well as optionally in combination with an angle profile
- Formation of a riser with top clip and bottom clip or edge profile as well as optional facing of the resulting horizontal joint between flooring and riser



# PROSTILTadvance 2.0

## Aluminium subconstruction system for balconies and terraces

### Technical data

<b>Material</b>	Aluminium EN AW-6060 (AlMgSi0,5) anodised black
<b>Field widths</b>	WPC/wooden decking boards max. 400mm, slabs max. 600mm
<b>Properties</b>	sea water-proof, weather-resistant high impact, blow and breaking strength; great dimensional stability; high durability; fire classification A1 (in accordance with DIN 4102)
<b>Resilience</b>	up to 5 kN/qm

### Summary

The principle of PROSTILTadvance 2.0 can be explained quickly. The 2.40 m long support profiles, which are available in two colours, can be extended to any length with the PROSTILTadvance 2.0 L-connector. The PROSTILTadvance 2.0 cross connector or PROSTILTadvance 2.0 bendable profile connector are used for the cross connection. You can position the cross connector anywhere in the groove of the support profile and lock it to also be able to connect a support profile there. This principle can be continuously extended in length and width. The support structure is finally positioned on the PROSTILTadvance 2.0 adjustable feet, which can build the patio at heights between 11 and 370 mm. With the possible difference in height, levels can be offset and steps can be formed. The high bearing capacity of the PROSTILTadvance 2.0 support structure also enables large span widths resulting in significantly less support points than for conventional substructures.

### Product advantages

- Simple and fast installation
- Manufacture of a second drainage level under the walkable flooring
- Rapid water draining due to open joints
- Good drying of the flooring due to ventilation underneath
- Different facing options
- No frost damage due to the flooring pedestal supports
- Compensation of height differences and gradients possible
- Due to the low weight of the system components, superstructures and roof terraces with weight limits can also be constructed
- Height adjustment is possible without an additional tool
- Flooring can be taken up again or replaced
- Laying of cables, pipes, ground drainage, etc. underneath the flooring level is possible, and these also remain accessible following installation
- Dry laying - the use of construction chemical binding agents (such as mortar) is not required
- Even joint width of 3 mm
- Invisible attachment of WPC/wood is possible



VERSION\_2023\_06\_GP\_MP

# PROSTILTadvance 2.0

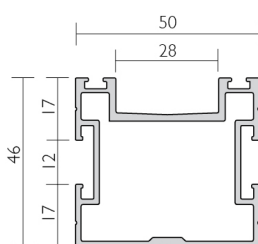
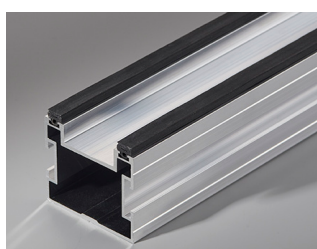
## Aluminium subconstruction system for balconies and terraces

### Overview system components

#### Overview profiles

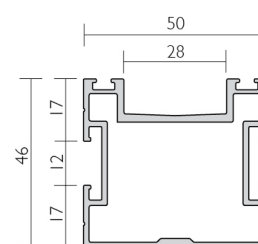
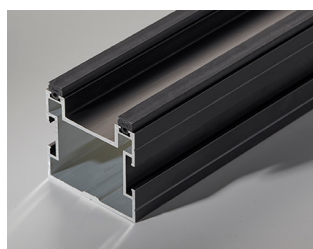
##### Support profile

Dimensions: 50 x 46 x 2400 mm (BxHxL)  
 Wall thickness: 1,5 mm (2,5 mm screw channel)  
 Material: Aluminium EN AW-6060 (AlMgSi0,5)  
 Item No.: 78305



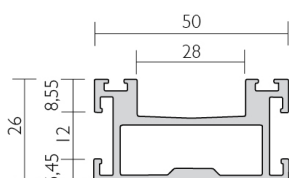
##### Support profile

Dimensions: 50 x 46 x 2400 mm (BxHxL)  
 Wall thickness: 1,5 mm (2,5 mm screw channel)  
 Material: Aluminium EN AW-6060 (AlMgSi0,5)  
 Item No.: 78306



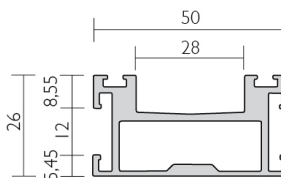
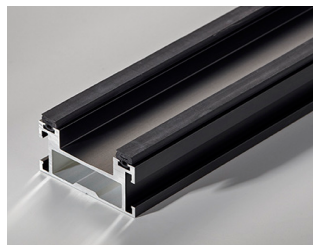
##### Support profile Slim

Dimensions: 50 x 26 x 2400 mm (BxHxL)  
 Wall thickness: 1,5 mm (2,5 mm screw channel)  
 Material: Aluminium EN AW-6060 (AlMgSi0,5)  
 Item No.: 78307



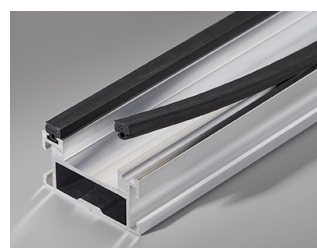
##### Support profile Slim

Dimensions: 50 x 26 x 2400 mm (BxHxL)  
 Wall thickness: 1,5 mm (2,5 mm screw channel)  
 Material: Aluminium EN AW-6060 (AlMgSi0,5)  
 Item No.: 78308



##### Silence Strip

Dimensions: 28 x 17 + Ø 7 x 15 mm  
 Wall thickness: 3,5 mm plate + 3 mm cylinder  
 Material: TPE-V 72 Shore A black  
 Item No.: 79761



Temperature resistant:  
 - 40 to + 120°C

# PROSTILTadvance 2.0

## Aluminium subconstruction system for balconies and terraces

### Overview Connector

#### L-connector

Dimensions: 46 x 32 x 200 mm (BxHxL)  
 Wall thickness: 3 mm  
 Material: Aluminium EN AW-6060 (AlMgSi0,5)  
 Item No.: 78310



#### L-connector Slim

Dimensions: 46 x 11,35 x 200 mm (BxHxL)  
 Wall thickness: 3 mm  
 Material: Aluminium EN AW-6060 (AlMgSi0,5)  
 Item No.: 78311



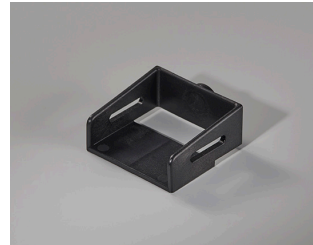
#### Cross-connector

Dimensions: 57 x 41 mm (BxH)  
 Wall thickness: 3 mm  
 Material: PA 6 GF25 (Polyamide 6 with 25% fiberglass)  
 Item No.: 78350



#### Cross-connector Slim

Dimensions: 57 x 24 mm (BxH)  
 Wall thickness: 3 mm  
 Material: PA 6 GF25 (Polyamide 6 with 25% fiberglass)  
 Item No.: 78352



#### Facing support

Dimensions: 67 x 50 mm (BxH)  
 Wall thickness: 3 mm  
 Material: PA 6 GF25 (Polyamide 6 with 25% fiberglass)  
 Item No.: 78351



#### Facing support Slim

Dimensions: 67 x 33 mm (BxH)  
 Wall thickness: 3 mm  
 Material: PA 6 GF25 (Polyamide 6 with 25% fiberglass)  
 Item No.: 78353



## PROSTILTadvance 2.0

### Aluminium subconstruction system for balconies and terraces

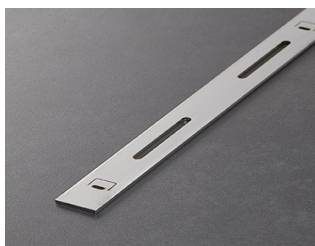
#### Bendable profile connector

Dimensions: 600 x 23 mm (BxL)

strength: 2 mm (10 mm reinforcing ribs)

Material: stainless steel V2A

Item No.: 78377



#### Overview additional product

#### T-support

Dimensions: 28 x 17 + Ø 7 x 15 mm

Wall thickness: 3,5 mm panel + 3 mm cylinder

Material: PA 6 GF25 (Polyamid 6 with 25% fiberglass)

Item No.: 78356



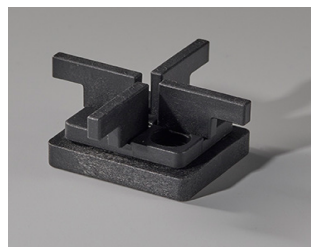
#### Cross-clip

Dimensions: Ø 7 x 4 + 45 x 45 mm

Wall thickness: 4 mm panel + 3 mm tile joints

Material: PA 6 GF25 (Polyamid 6 with 25% fiberglass)

Item No.: 78354



#### Board initial and end holder

Dimensions: 85 x 25 x 21 mm

Wall thickness: 1,5 mm

Material: stainless steel V2A

Item No.: 78374

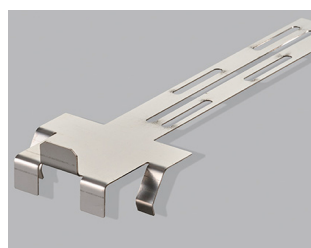


#### Upper clip

Dimensions: 200 x 40 x 1 mm

Material: stainless steel V2A

Item No.: 78370

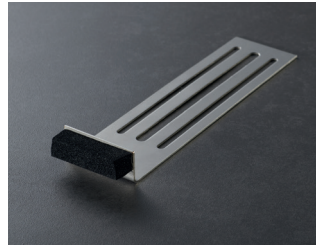
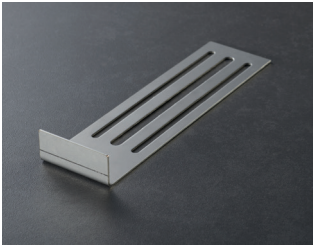


# PROSTILTadvance 2.0

## Aluminium subconstruction system for balconies and terraces

### Spacer

Dimensions: 200 x 40 x 1 mm  
Material: Stainless steel V2A  
with / without neoprene pad  
Item No.: 78372 / 78373



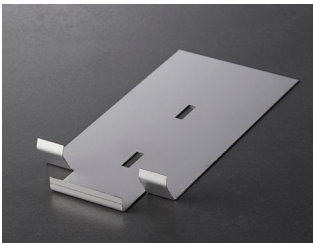
### Facing holder

Wall thickness: 2 mm  
Material: stainless steel V2A  
Item No.: 78375 / 78376



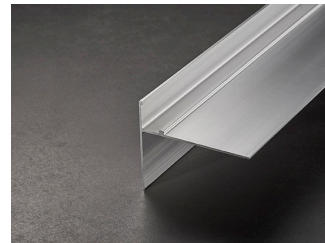
### Lower clip

Dimensions: 46 x 32 x 300 mm (BxHxL)  
Wall thickness: 1 mm  
Material: Stainless steel V2A  
Item No.: 78350



### TOS-Profil

Dimensions: 92 x 75 x 3000mm (BxHxL)  
Wall thickness: 1,5mm  
Material: Aluminium EN AW-6060 (AlMgSi0,5)  
Item No.: 78332 aluminium coated anthracite /  
78300 aluminium mill-finished



### TOS Connector

Dimensions: 50 x 75 mm (BxHx)  
Wall thickness: 1,0 mm  
Material: Aluminium EN AW-6060 (AlMgSi0,5)  
anthracite or mill-finished  
Item No.: 78216 / 78200



### TOS External and internal corner

Dimensions: 50 x 75 mm (BxHx)  
Wall thickness: 1,0 mm  
Material: Aluminium EN AW-6060 (AlMgSi0,5)  
anthracite or mill-finished  
Item No.: 76216 / 76316 / 76200 / 76300



# PROSTILTadvance 2.0

## Aluminium subconstruction system for balconies and terraces

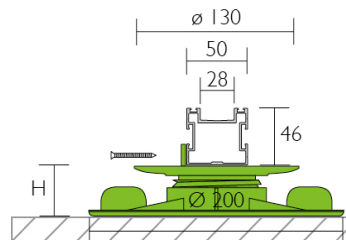
### Overview pedestal supports

#### Adjustable foot Basic U

Height adjustment (mm): 11 - 15 / 15 - 19 / 19 - 27 / 27 - 40

Material: Polypropylene

Item No.: 79820 / 79821 / 79822 / 79823

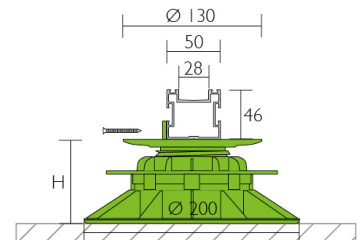
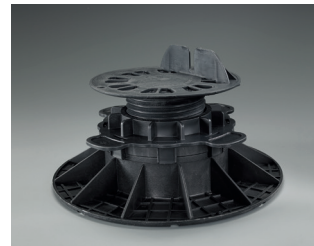


#### Adjustable foot Basic+ U

Height adjustment (mm): 40 - 70 / 70 - 120 / 120 - 170 / 170 - 270 / 270 - 370

Material: Polypropylene

Item No.: 79824 / 79825 / 79826 / 79827 / 79828



#### Inclined support

for continuous balancing of gradients from 0 - 7 %

Material: Polypropylene

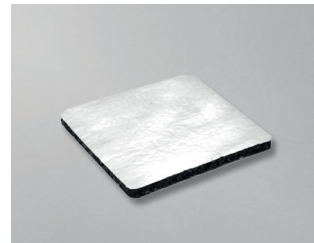
Item No.: 79812



#### Rubber granulate pad

Dimensions: 200 x 200 mm / 250 x 250 mm

Item No.: 79818 / 79819



#### Adapter head / adapter head U

for the continuous balancing of gradients from 0 - 5 %

Item No.: 79790 / 79791



## PROSTILTadvance 2.0

Aluminium subconstruction system for balconies and terraces

### Overview additional product

#### PROSTILT socket wrench E 6,3

Spanner gap 7 mm / 8 mm

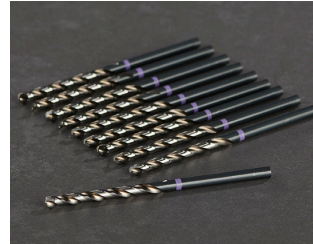
Item No.: 94337 / 94336



#### PROSTILT metal drill

HSCO MFD Speed

Item No.: 94330 / 94333 / 94332



#### PROSTILT countersink 90°

8,3 mm / 12,4 mm

Item No.: 94334 / 94335



#### PROSTILT drilling screws

stainless steel V2A, flat-head or 6 KT.

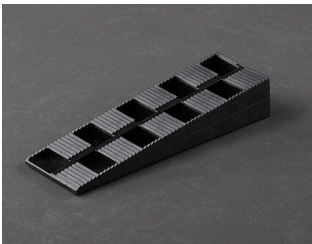
Item No.: 94338



#### PROSTILT assembly wedges

Gradient 2 - 10 mm / 4 - 23 mm

Item No.: 79814 / 79815



#### OTTOCOLL M500 / M501

hybrid adhesive and sealants

Item No.: 93514



#### Bits

or flat-head drilling screws

Item No.: 94333





# PROSTILTadvance 2.0

## Aluminium subconstruction system for balconies and terraces

### Standards and regulations

It is recommended that the following standards and regulations are taken into account:

- DIN 18195 “Waterproofing”
- DIN 18560 “Screeds in building construction”
- Regulations of the German roofing trade, “Regulations for roofs with sealing”
- ZDB data sheet “Outdoor floorings”
- DIN 18040-2 Barrier-free construction, flats
- DIN 1986-100 “Drainage systems for buildings and properties”
- Structural information on natural stone, 1.4 “Outdoor floorings” from the German Natural Stone Association
- ATV DIN 18336 Sealing work
- ATV DIN 18332 Natural stone laying

### Important notes

- PROSTILTadvance 2.0 is suitable for creating walkable paved areas in private residential areas and publicly used areas; the area must not be driven on.
- Floorings such as ceramic, concrete or natural stone slabs must be checked in advance for their suitability for Prostiltadvance 2.0, or must be approved by the manufacturer for use.
- Provided no facing solution is required, slabs of > 21 mm thickness can also be laid.
- When laying the flooring, the field width, load capacity and permissible span width must be observed.
- For free laying, the free flooring edges must be secured with suitable edging (e.g in conjunction with PROSTILTadvance 2.0 clips top and bottom, PROSTILTadvance 2.0 facing profile) against slippage of the flooring.

*All details, references, notes, applicable specialist regulations, guidelines, standards and specialist knowledge are directed towards the German, and insofar as they are congruent, to the existing European regulations and training standards, irrespective of additional country-specific extensions or modifications. All our information is based on our experience and carefully performed tests. The variety of additional materials that might be used and differing construction and working conditions cannot be individually checked or influenced by us. The fulfilment of an outstanding service contract and the manufacturing of a demonstrable functional capability of the trades is therefore dependent on adherence to the current VOB (German Construction Contract Procedures) regulations and recognised technological rules. Our details do not preclude responsible planners and processors from their duty to independently assess the conditions of a building and suitable application of the products. In case of doubt, please seek technical application advice or carry out your own tests. The manufacturer's guidelines for laying and processing the surfacing material or the guidelines for other products used must be observed. The publication of this product data sheet invalidates all previous product data sheets*