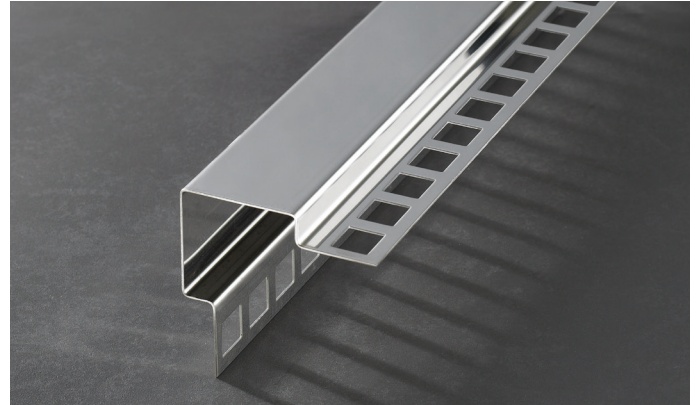
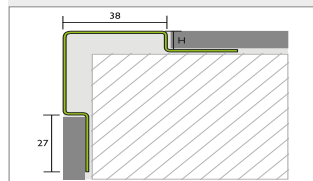


PROTECT stainless steel I.430I (V2A)

Corner protection profile for tiling

Schematic representation / installation option

H = 8 - 12.5 mm



Use and applications:

PROTECT corner protection profile for tiling made of I.430I (V2A) stainless steel, protection for flush installation of tiled wall external corners against impact, scuffing and other mechanical effects.

Gluing on the substrate creates extremely robust edge protection. The profiles are intended for coverings of thicknesses from 8 mm to 12.5 mm.

The PROTECT corner protection profiles for tiling made of high-quality material have been developed primarily for use in commercial production areas, such as the food and luxury food industries, canteens and industrial kitchens, laboratories, as well as hospitals, among others.

Product advantages:

PROTECT corner protection profile for tiling made of stainless steel is easy to install.

With the geometry and type of installation, different thicknesses of covering can be laid cleanly without any protruding edges or profile parts. This ensures optimum cleaning and eliminates the risk of injury from metal jutting out.

Small irregularities in the perpendicularity of the floor can be evened out easily.

The stable stainless steel, the geometry, the large surface areas and the grouted or mechanical connection to the supporting surface protect against impact and shocks without directly affecting adjacent floorings. This ensures permanent hygiene and protects from injuries.

Brilliant and brushed surfaces are available.

Technical data:

Material: I.430I (V2A) stainless steel	brilliant	brushed
Material thicknesses [mm]	0.8	0.8
Width [mm]	38 × 38	38 × 38
Heights [mm]	8 / 10 / 11 / 12,5	8 / 10 / 11 / 12,5
Lengths [m]	2.5	2.5

For details see current price list

Delivery method:

Profiles with protective film, individually shrink-wrapped. Bundles wrapped in stretch film at both ends, packaged in outer packaging for transportation.

5 profiles	1 bundle
Packaging unit	Bars 10 / 40
Customs tariff number for stainless steel:	72224050

Current quantities and packaging units are available in the price list, the relevant price sheets or new product sheets. Alternatively, please enquire with your specialist dealer.

Additional products:

PROLINE cutting disc

Storage and transport:

Transport and store in dry spaces protected from dirt, external impact, abrasion and other foreign bodies.

To avoid the risk of deformation, do not place loads on the profiles and preferably store horizontally.

Protect laminated profiles from the effects of sun / UV rays.

PROTECT stainless steel 1.4301 (V2A)**Disposal:**

Profiles removed from foreign materials can be recycled as metals. Observe any official local regulations

Thermal decomposition:

No decomposition if used as instructed. Avoid strong heating.

Methods:**Preparatory work:**

The laying and installation surface must be firm, dry, even, flush, perpendicular; free from separating agents and solvents and suitable or prepared for the use of the laying materials intended (e.g. primed).

The profiles are to be cleaned of grease, dust, oil or other foreign matter on the interior side to be glued prior to attachment, and may have to be primed depending on the laying material to be used.

The specifications of the laying material manufacturer must be taken into account.

Installation:

Select PROTECT corner protection profile for tiling made of stainless steel according to the designated laying thickness. Check the profile for damage – only use undamaged profiles.

Shorten profiles to the appropriate length if required. Use suitable clamping devices, saws or cutting discs as well as your own protective equipment before cutting. Trim cut edges using a suitable tool. Use Proline cutting discs for cutting. Tools that have already been used for other metals should not be used for stainless steel. Separating tools must be free of iron, chlorine and sulphur.

The profiles should be set flush or slightly deeper than the finished covering.

Insert and adjust PROTECT corner protection profile for tiling into the newly laid laying material evenly. Then level out the entire surface.

For a particularly stable construction and to prevent cavities, the profiles can also be grouted. Select a suitable low-shrink grout that hardens firmly.

Depending on the type of grout and the gap from the surface, the grout can be filled or pressed in behind the profile residually or wholly from the side or from above. The selected grout must be sufficiently stable not to slip when setting.

In any case, press in grout under the edges of the profile so that they maintain a secure, stable connection with the weight-bearing surface.

Then clean any excess or leaking grout remains from the exposed sides of the profile. After completing the installation work, remove any protective film from the exposed sides of the profiles.

Provided there are joints in the overall area, the joint can meet the profile of the joint width used, but should not be designed to be less than 2 mm wide. The joint between the covering and profile must be filled in completely with grout or silicone.

The adjacent covering materials must be completely bedded and worked in across the support shanks.

Grout and adhesive remnants should be cleaned quickly and completely from the exposed side of the profile with clean water. Laying and jointing materials should not be allowed to dry out. Abrasive laying and joint sealants must not be used.

Cleaning:

With clear water; pH-neutral cleaning agents, sponge or cleaning cloth.

Avoid abrasive and scratching elements.

Clean profiles as required with suitable cleaning pastes. Use cleaning agents or polishing pastes containing alcohol or developed specially for stainless steel if required.

Carry out maintenance cleaning regularly, adapted to the local conditions.

In locations where materials containing chlorine are used, also clean the profiles regularly away from standing water to prevent accumulation or concentration.

PROTECT stainless steel 1.4301 (V2A)**Chemical and physical resilience:**

Check cleaning agents or accumulating water before use to ensure there are no corrosive or damaging effects on the profiles. This also applies to their correct dosing when using.

Do not use any agents containing salt or hydrofluoric acid. Avoid contact with substances containing chloride ions (e.g. sometimes contained in rock salt, chlorinated swimming pool water, strong acids or alkalis).

Stainless steel reacts with oxygen from the air and forms a protective layer, which may be damaged by abrasion from normal steel or iron, sparks from welding or milling work, leading to corrosion.

After complete hardening of the adhesive and joint substances, the profile is mechanically resilient for the intended use.

Abrasive effects or finishing with damaging tools or activities on a regular basis is to be avoided.

Cleaning devices and their brushes and inserts must be checked for harmful abrasive effects.

Standards and regulations:

Besides adhesion to and consideration of the applicable technical regulations, standards and generally recognised technical regulations, the following regulations should be noted in particular:

- ATV DIN 18352 Tiling and slab laying
- ATV DIN 18157 Application of ceramic coverings using the thin-bed method.
- ATV DIN 18332 Natural stone laying
- DIN 18202 "Tolerances in building construction"
- Information about stainless steel available at www.edelstahl-rostoffrei.de, in particular:
MB 965 Cleaning of stainless steel.

Important notes:

- Preferably use neutral bonding silicone with the profiles.
- When grouting with reactive resins, it is important to ensure in advance that the profile surfaces will not be damaged and that excess adhesive and joint materials can be fully removed.
- Iron particles from tools, scaffolds, means of transport, etc. must be removed immediately. Swarfs, shavings and weld spatters from structural steel work can lead to corrosion.
- Regular use of effective materials in the correct concentration, constitution, combination and at the correct temperature is responsible for the chemical / physical resilience of the profiles. It is not possible to list them all here. Resistance to corrosion must therefore be checked and analysed in individual cases
- Chloride ions contained in fluids, condensates and chemicals have a corrosive effect. These stresses should be avoided or eliminated by being washed off thoroughly. For short-term stresses a concentration of 250 mg/litre should not be exceeded.
- The higher the mechanical protective effect created, the harder the adhesive must harden to therefore hold better. For high stresses, preferably use suitable reactive resin.

All details, references, notes, applicable specialist regulations, guidelines, standards and specialist knowledge are directed towards the German, and insofar as they are congruent, to the existing European regulations and training standards, irrespective of additional country-specific extensions or modifications. All our information is based on our experience and carefully performed tests. The variety of additional materials that might be used and differing construction and working conditions cannot be individually checked and influenced by us. The quality and implementability of your work thus depends on your professional assessment of the construction site and product application. If in doubt, conduct your own small-scale tests or obtain technical advice. The manufacturer's guidelines for laying and processing the surfacing material or the guidelines for other products used must be observed. The publication of this product data sheet invalidates all previous product data sheets.

© Proline Systems 2018 – reproduction and passing on by our customers to their customers is permitted, insofar as there is a clear indication of our copyright. All other rights reserved.

PROTECT stainless steel 1.4301 (V2A)

Tender specification: "Single item service description" for PROTECT corner protection profile for tiling in 1.4301 (V2A) stainless steel

Quantity	unit	Service description
.....	rm	PROTECT corner protection profile for tiling made of 1.4301 (V2A) stainless steel
.....	rm	PROTECT corner protection profile for tiling made of 1.4301 (V2A) stainless steel

Delivery and installation of corner protection profiles made of folded stainless steel in 1.4301 (V2A) for mounting at 90° corner formations flush with the tile flooring, to protect the wall coverings in the corner areas based on the planning or specifications of the construction management. Install professionally taking account of the manufacturers' specifications.

- with grout backfilling of the profiles
- without grout backfilling of the profiles

- Item:
- PROTECT corner protection profile
 - 1.4301 stainless steel - brilliant, material thickness 0.8 mm
 - 1.4301 stainless steel - brushed, material thickness 0.8 mm

- Height:
- 8 mm
 - 10 mm
 - 11 mm
 - 12.5 mm,

manufacturer: Proline Systems GmbH

Item no.:
 Material: €/m/unit
 Remuneration: €/m/unit
 Unit price: €/m/unit Total price: €